



COVER GRILLES FCM



Floor convectors of new generation

Cover grilles integrate the convector into the interior – That's why they are taken into such an account.

The upper part of the floor convector is designed to the last detail.

All cover grilles are produced in two basic versions: rolling transverse and fixed longitudinal.

The basic natural materials for the production of grids are duralumin, beech, oak and stainless steel.

Aluminum alloy grilles are available in natural aluminum, bronze, gold and black. Beech and oak grids can be delivered natural or lacquered and oiled.

Standard grille height is 20mm, 18mm available on request

Dural grilles are available in natural aluminum, bronze, gold and black. Beech and oak grids can be supplied with a "L" or "Z" molding. Rails must be ordered together with the grid, cannot be ordered separately.

All supplied grilles allow standard surface load and are therefore safe to walk

Standard delivery includes:

- 8 standard widths (180, 200, 240, 260, 280, 300, 340 and 420) mm
- 38 standard lengths from 800 to 7000 mm

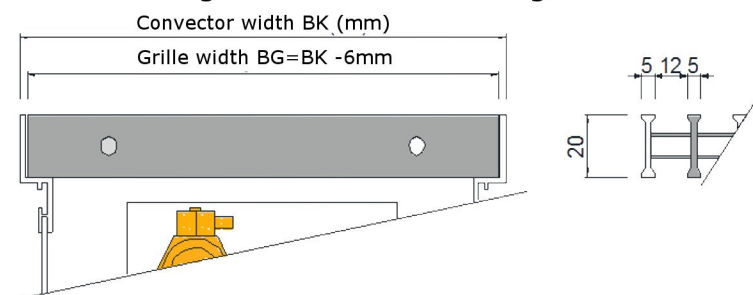
Upon request possibility of ordering atypical dimensions of grids, different widths and lengths, or corner and the like.

Extended warranty 10 years

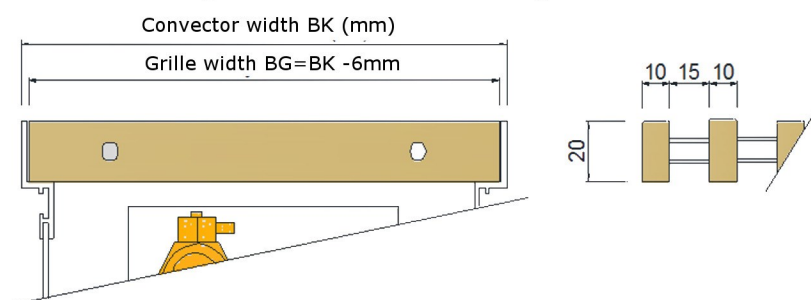
Since all grids are made from natural materials, slight variations in color cannot be excluded.

Basic types and dimensions

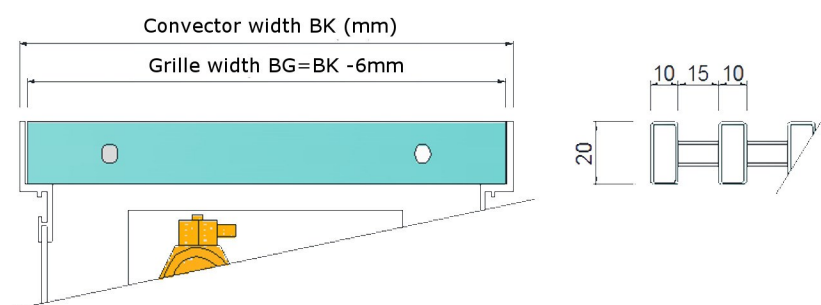
Convactor grille transverse rolling dural



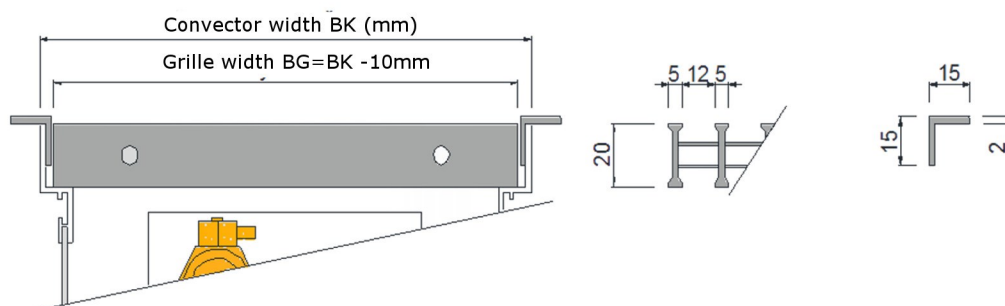
Convactor grille transverse rolling beech oak



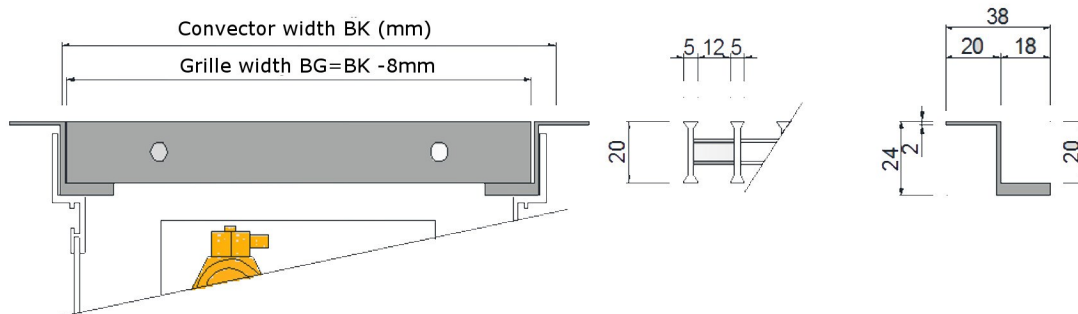
Convactor grille transverse rolling stainless steel



Convactor grille transverse rolling, dural with a "L" molding



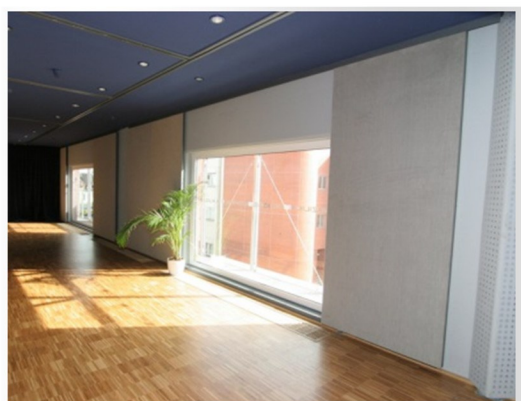
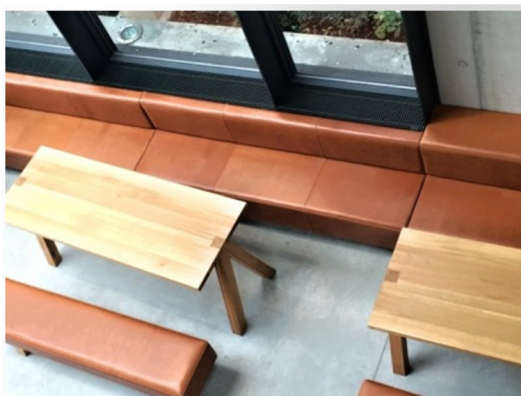
Convactor grille transverse rolling, dural with a "Z" molding



Weight

Width	180			200			240			260		
	FCM	FCML	FCMZ	FCM	FCML	FCMZ	FCM	FCML	FCMZ	FCM	FCML	FCMZ
Aluminum	1,80	2,12	2,78	1,97	2,31	2,97	2,33	2,68	3,36	2,51	2,86	3,56
Beech	1,19	1,52	2,17	1,30	1,64	2,30	1,53	1,88	2,56	1,65	2,00	2,70
Oak	1,19	1,52	2,17	1,30	1,64	2,30	1,53	1,88	2,56	1,65	2,00	2,70
Stainless	3,40	3,73	4,38	3,76	4,09	4,76	4,48	4,83	5,52	4,84	5,19	5,89

Width	280			300			340			420		
	FCM	FCML	FCMZ	FCM	FCML	FCMZ	FCM	FCML	FCMZ	FCM	FCML	FCMZ
Aluminum	2,69	3,04	3,75	2,87	3,23	3,95	3,22	3,60	4,34	3,94	4,33	5,12
Beech	1,76	2,12	2,83	1,88	2,24	2,96	2,11	2,48	3,22	2,57	2,96	3,75
Oak	1,76	2,12	2,83	1,88	2,24	2,96	2,11	2,48	3,22	2,57	2,96	3,75
Stainless	5,20	5,56	6,27	5,57	5,93	6,65	6,29	6,66	7,40	7,73	8,12	8,91



Type	Width	Length	Material	Design
FCM	180	0800	11 - Dural	01 - elox aluminum natural
	200	...		02 - elox brass
	240	...		03 - elox black
	260	...		04 - elox gold
	280	...		
	300	...		
	340	...		
	420	7000		

Type	Width	Length	Material	Design
FCM	180	0800	12 - Beech	01 - nature
	200	...	13 - Oak	02 - geoelt
	240	...		03 - lacquered
	260	...		
	280	...		
	300	...		
	340	...		
	420	7000		

Type	Width	Length	Material	Design
FCM	180	0800	14 - steel	01 - nature
	200	...		
	240	...		
	260	...		
	280	...		
	300	...		
	340	...		
	420	7000		

"L" molding design – order code L

"Z" molding design – order code Z