



WALL CONVECTORS FCW



Discreet and timeless design, simple and practical
without ventilator

Discreet and timeless design, simple and practical without ventilator. Flat front cover in combination with aluminum grille

Very low water volume with high performance exchanger ensures low energy consumption and maximum performance with minimal noise.

Convector responds to the temperature requirements of the heated space.

Aluminum design of the convector guarantees its unlimited lifetime.

Color choice from RAL chart – without extra charge.

Thanks to the unique design, the production of the convector is fully variable.

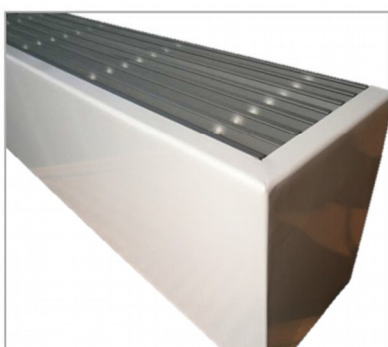
- 8 standard widths (140, 170, 200, 280, 340, 400, 500 a 600) mm
- 4 standard depths (100, 140, 180 a 240) mm
- 15 standard produced lengths 600 - 2000 mm

Possibility to order atypical dimensions without increasing the price upon request.

Heat output measured in an accredited laboratory

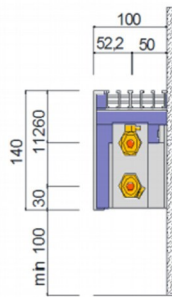
Maximum operating pressure 1,0 Npa (10bar)
Maximum operating temperature 110°C

Extended warranty of 10 years for the whole radiator.

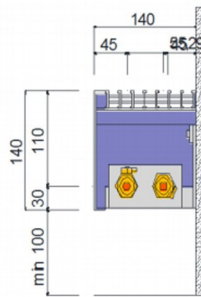


Basic types and dimensions

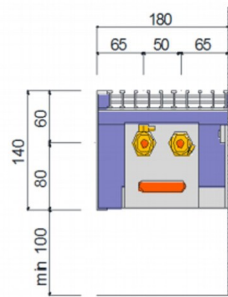
FCW-140-100



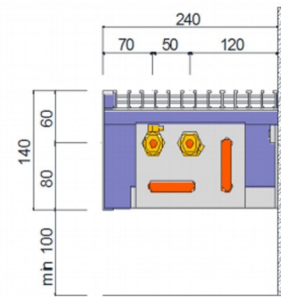
FCW-140-140



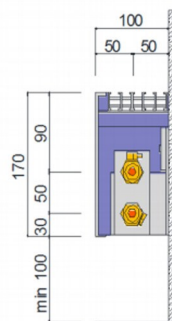
FCW-140-180



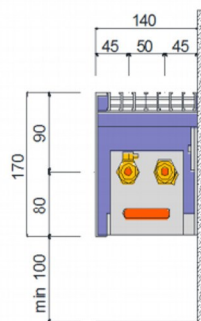
FCW-140-240



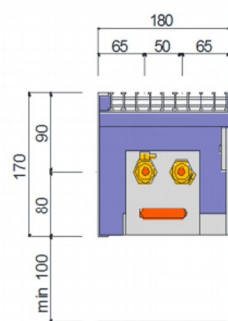
FCW-170-100



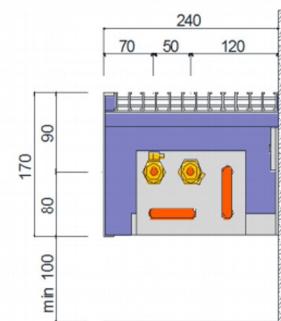
FCW-170-140



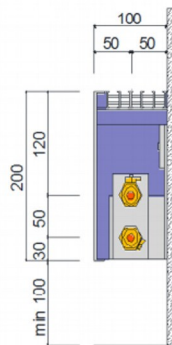
FCW-170-180



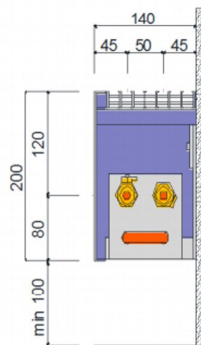
FCW-170-240



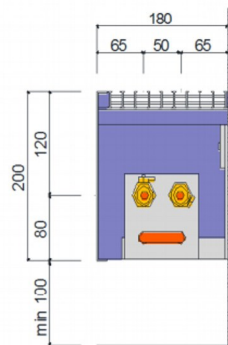
FCW-200-100



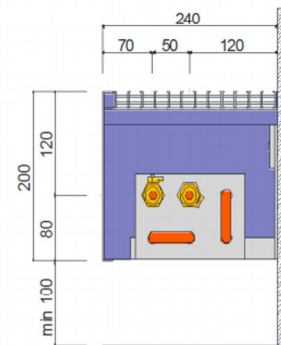
FCW-200-140



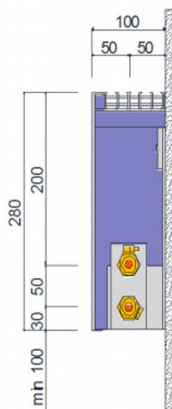
FCW-200-180



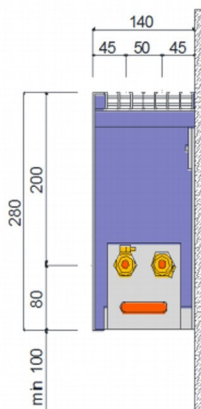
FCW-200-240



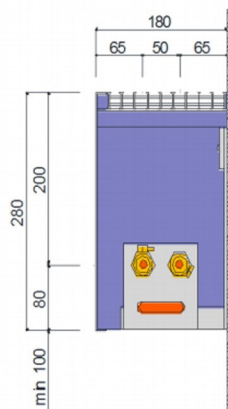
FCW-280-100



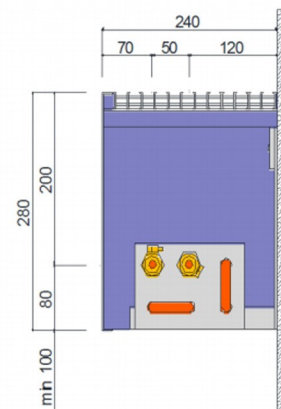
FCW-280-140



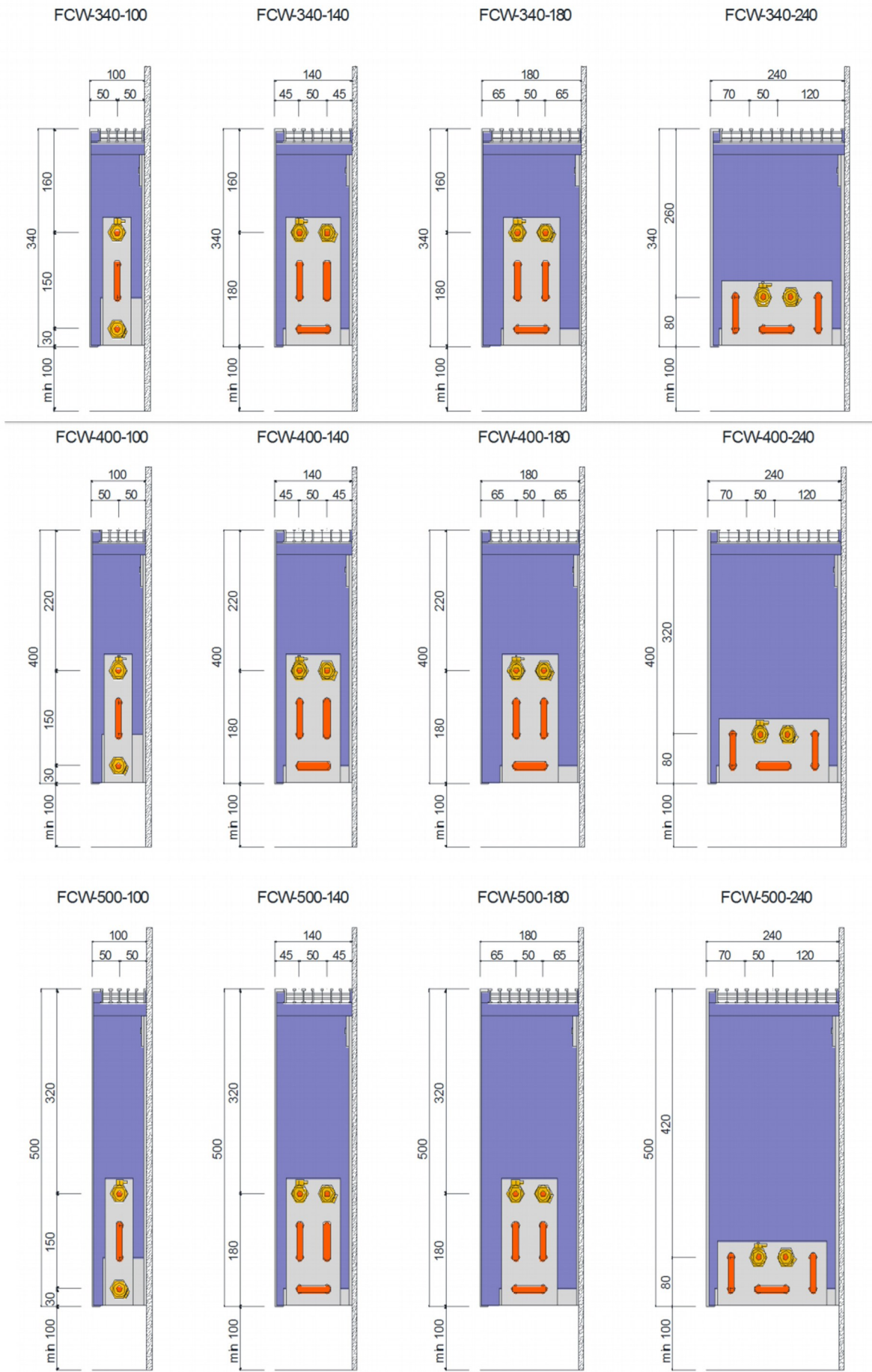
FCW-280-180



FCW-280-240



Basic types and dimensions



Temperature performance

Thermal power measured at a temperature gradient of 75/65/20 EN 442, values in watts. The values given are for 2nd fan speed.

| Width (mm) | | 140 | | | | 170 | | | | 200 | | | | 280 | | | |
|-------------|------|------|------|------|------|------|------|------|------|------|------|------|------|------|------|------|------|
| Height (mm) | | 100 | 140 | 180 | 240 | 100 | 140 | 180 | 240 | 100 | 140 | 180 | 240 | 100 | 140 | 180 | 240 |
| Length (mm) | 600 | 191 | 368 | 537 | 700 | 206 | 397 | 646 | 886 | 223 | 429 | 678 | 918 | 270 | 540 | 790 | 1029 |
| | 700 | 222 | 429 | 628 | 817 | 240 | 463 | 755 | 1033 | 259 | 500 | 792 | 1070 | 313 | 631 | 922 | 1201 |
| | 800 | 254 | 491 | 717 | 934 | 274 | 530 | 862 | 1182 | 296 | 572 | 904 | 1224 | 358 | 722 | 1053 | 1374 |
| | 900 | 286 | 552 | 807 | 1051 | 309 | 596 | 971 | 1329 | 334 | 644 | 1019 | 1377 | 404 | 811 | 1186 | 1544 |
| | 1000 | 318 | 613 | 896 | 1167 | 343 | 662 | 1078 | 1476 | 371 | 715 | 1131 | 1529 | 449 | 901 | 1317 | 1715 |
| | 1100 | 349 | 674 | 986 | 1284 | 377 | 728 | 1186 | 1624 | 407 | 786 | 1244 | 1683 | 493 | 991 | 1449 | 1888 |
| | 1200 | 381 | 735 | 1075 | 1401 | 411 | 794 | 1294 | 1772 | 444 | 858 | 1357 | 1835 | 538 | 1082 | 1581 | 2059 |
| | 1300 | 418 | 809 | 1183 | 1543 | 451 | 874 | 1426 | 1952 | 488 | 944 | 1496 | 2022 | 590 | 1189 | 1741 | 2268 |
| | 1400 | 455 | 882 | 1292 | 1685 | 491 | 952 | 1556 | 2132 | 531 | 1028 | 1632 | 2208 | 642 | 1297 | 1900 | 2476 |
| | 1500 | 492 | 955 | 1401 | 1827 | 531 | 1032 | 1687 | 2313 | 574 | 1114 | 1769 | 2396 | 694 | 1405 | 2059 | 2686 |
| | 1600 | 528 | 1028 | 1509 | 1969 | 570 | 1110 | 1817 | 2493 | 616 | 1199 | 1905 | 2582 | 745 | 1512 | 2218 | 2894 |
| | 1700 | 565 | 1101 | 1618 | 2111 | 610 | 1189 | 1947 | 2671 | 659 | 1284 | 2042 | 2766 | 797 | 1620 | 2378 | 3103 |
| | 1800 | 600 | 1175 | 1726 | 2252 | 648 | 1269 | 2078 | 2851 | 700 | 1370 | 2179 | 2952 | 847 | 1729 | 2538 | 3311 |
| | 1900 | 638 | 1248 | 1834 | 2394 | 689 | 1348 | 2209 | 3032 | 744 | 1456 | 2317 | 3140 | 900 | 1836 | 2697 | 3520 |
| 2000 | 674 | 1322 | 1943 | 2537 | 728 | 1428 | 2341 | 3213 | 786 | 1542 | 2455 | 3327 | 951 | 1944 | 2857 | 3729 | |

| Width (mm) | | 340 | | | | 400 | | | | 500 | | | | 600 | | | |
|-------------|------|------|------|------|------|------|------|------|------|------|------|------|------|------|------|------|------|
| Height (mm) | | 100 | 140 | 180 | 240 | 100 | 140 | 180 | 240 | 100 | 140 | 180 | 240 | 100 | 140 | 180 | 240 |
| Length (mm) | 600 | 297 | 584 | 833 | 1072 | 326 | 630 | 879 | 1119 | 359 | 681 | 930 | 1169 | 395 | 735 | 984 | 1224 |
| | 700 | 345 | 681 | 973 | 1251 | 379 | 735 | 1027 | 1306 | 417 | 794 | 1086 | 1365 | 459 | 858 | 1150 | 1428 |
| | 800 | 394 | 779 | 1111 | 1431 | 434 | 842 | 1174 | 1494 | 477 | 909 | 1241 | 1561 | 525 | 982 | 1314 | 1634 |
| | 900 | 444 | 876 | 1251 | 1609 | 488 | 946 | 1321 | 1679 | 537 | 1022 | 1397 | 1755 | 591 | 1103 | 1479 | 1837 |
| | 1000 | 494 | 973 | 1389 | 1787 | 543 | 1051 | 1467 | 1865 | 597 | 1135 | 1551 | 1949 | 657 | 1226 | 1642 | 2040 |
| | 1100 | 542 | 1071 | 1528 | 1967 | 596 | 1156 | 1614 | 2053 | 656 | 1249 | 1707 | 2145 | 721 | 1349 | 1807 | 2245 |
| | 1200 | 591 | 1168 | 1668 | 2146 | 651 | 1262 | 1761 | 2239 | 716 | 1362 | 1862 | 2340 | 787 | 1471 | 1971 | 2449 |
| | 1300 | 649 | 1284 | 1836 | 2363 | 714 | 1387 | 1939 | 2466 | 785 | 1498 | 2050 | 2577 | 864 | 1618 | 2170 | 2697 |
| | 1400 | 706 | 1401 | 2004 | 2580 | 777 | 1513 | 2116 | 2692 | 855 | 1634 | 2237 | 2813 | 940 | 1764 | 2368 | 2944 |
| | 1500 | 764 | 1517 | 2172 | 2798 | 840 | 1638 | 2293 | 2920 | 924 | 1769 | 2424 | 3051 | 1017 | 1911 | 2566 | 3192 |
| | 1600 | 820 | 1633 | 2339 | 3015 | 902 | 1764 | 2470 | 3146 | 992 | 1905 | 2611 | 3287 | 1091 | 2057 | 2764 | 3440 |
| | 1700 | 877 | 1750 | 2508 | 3232 | 965 | 1890 | 2648 | 3372 | 1061 | 2041 | 2799 | 3523 | 1167 | 2205 | 2962 | 3687 |
| | 1800 | 931 | 1867 | 2676 | 3449 | 1025 | 2016 | 2825 | 3598 | 1127 | 2177 | 2986 | 3760 | 1240 | 2352 | 3161 | 3934 |
| | 1900 | 990 | 1983 | 2844 | 3667 | 1090 | 2142 | 3003 | 3825 | 1198 | 2313 | 3174 | 3997 | 1318 | 2498 | 3359 | 4182 |
| 2000 | 1046 | 2099 | 3012 | 3884 | 1151 | 2267 | 3180 | 4052 | 1266 | 2449 | 3361 | 4234 | 1393 | 2645 | 3557 | 4429 | |

Coefficient K1 for conversion of heat output

| Water inlet temperature (°C) | Air temperature | FCW wall convectors without fan | | | | | | | | | | | | Return water temperature (°C) | |
|------------------------------|-----------------|---------------------------------|------|------|------|------|------|------|------|------|------|------|------|-------------------------------|----|
| | | 25 | 30 | 35 | 40 | 45 | 50 | 55 | 60 | 65 | 70 | 75 | 80 | | 85 |
| 90 | 15 | 0,57 | 0,69 | 0,79 | 0,89 | 0,98 | 1,07 | 1,16 | 1,24 | 1,32 | 1,40 | 1,48 | 1,55 | 1,63 | |
| | 20 | 0,40 | 0,54 | 0,65 | 0,75 | 0,84 | 0,93 | 1,02 | 1,10 | 1,18 | 1,26 | 1,33 | 1,41 | 1,48 | |
| | 24 | 0,22 | 0,41 | 0,53 | 0,64 | 0,73 | 0,82 | 0,91 | 0,99 | 1,07 | 1,15 | 1,22 | 1,30 | 1,37 | |
| 85 | 15 | 0,54 | 0,65 | 0,75 | 0,84 | 0,93 | 1,02 | 1,10 | 1,18 | 1,26 | 1,33 | 1,41 | 1,48 | | |
| | 20 | 0,37 | 0,50 | 0,61 | 0,71 | 0,80 | 0,88 | 0,96 | 1,04 | 1,12 | 1,20 | 1,27 | 1,34 | | |
| | 24 | 0,20 | 0,38 | 0,50 | 0,60 | 0,69 | 0,78 | 0,86 | 0,94 | 1,01 | 1,09 | 1,16 | 1,23 | | |
| 80 | 15 | 0,50 | 0,61 | 0,71 | 0,80 | 0,88 | 0,96 | 1,04 | 1,12 | 1,20 | 1,27 | 1,34 | | | |
| | 20 | 0,35 | 0,47 | 0,57 | 0,66 | 0,75 | 0,83 | 0,91 | 0,99 | 1,06 | 1,13 | 1,20 | | | |
| | 24 | 0,19 | 0,35 | 0,46 | 0,56 | 0,65 | 0,73 | 0,81 | 0,88 | 0,96 | 1,03 | 1,10 | | | |
| 75 | 15 | 0,47 | 0,57 | 0,66 | 0,75 | 0,83 | 0,91 | 0,99 | 1,06 | 1,13 | 1,20 | | | | |
| | 20 | 0,32 | 0,44 | 0,53 | 0,62 | 0,70 | 0,78 | 0,86 | 0,93 | 1,00 | 1,07 | | | | |
| | 24 | 0,17 | 0,33 | 0,43 | 0,52 | 0,60 | 0,68 | 0,76 | 0,83 | 0,90 | 0,96 | | | | |
| 70 | 15 | 0,44 | 0,53 | 0,62 | 0,70 | 0,78 | 0,86 | 0,93 | 1,00 | 1,07 | | | | | |
| | 20 | 0,30 | 0,40 | 0,50 | 0,58 | 0,66 | 0,73 | 0,80 | 0,87 | 0,94 | | | | | |
| | 24 | 0,15 | 0,30 | 0,40 | 0,48 | 0,56 | 0,63 | 0,70 | 0,77 | 0,84 | | | | | |
| 65 | 15 | 0,40 | 0,50 | 0,58 | 0,66 | 0,73 | 0,80 | 0,87 | 0,94 | | | | | | |
| | 20 | 0,27 | 0,37 | 0,46 | 0,54 | 0,61 | 0,68 | 0,75 | 0,81 | | | | | | |
| | 24 | 0,14 | 0,27 | 0,36 | 0,44 | 0,51 | 0,58 | 0,65 | 0,71 | | | | | | |
| 60 | 15 | 0,37 | 0,46 | 0,54 | 0,61 | 0,68 | 0,75 | 0,81 | | | | | | | |
| | 20 | 0,24 | 0,34 | 0,42 | 0,49 | 0,56 | 0,63 | 0,69 | | | | | | | |
| | 24 | 0,12 | 0,24 | 0,33 | 0,40 | 0,47 | 0,53 | 0,60 | | | | | | | |
| 55 | 15 | 0,34 | 0,42 | 0,49 | 0,56 | 0,63 | 0,69 | | | | | | | | |
| | 20 | 0,22 | 0,30 | 0,38 | 0,45 | 0,51 | 0,57 | | | | | | | | |
| | 24 | 0,10 | 0,21 | 0,29 | 0,36 | 0,42 | 0,48 | | | | | | | | |
| 50 | 15 | 0,30 | 0,38 | 0,45 | 0,51 | 0,57 | | | | | | | | | |
| | 20 | 0,19 | 0,27 | 0,34 | 0,40 | 0,46 | | | | | | | | | |
| | 24 | 0,09 | 0,19 | 0,26 | 0,32 | 0,37 | | | | | | | | | |
| 45 | 15 | 0,27 | 0,34 | 0,40 | 0,46 | | | | | | | | | | |
| | 20 | 0,16 | 0,24 | 0,30 | 0,35 | | | | | | | | | | |
| | 24 | 0,07 | 0,16 | 0,22 | 0,27 | | | | | | | | | | |



Weight and water volume

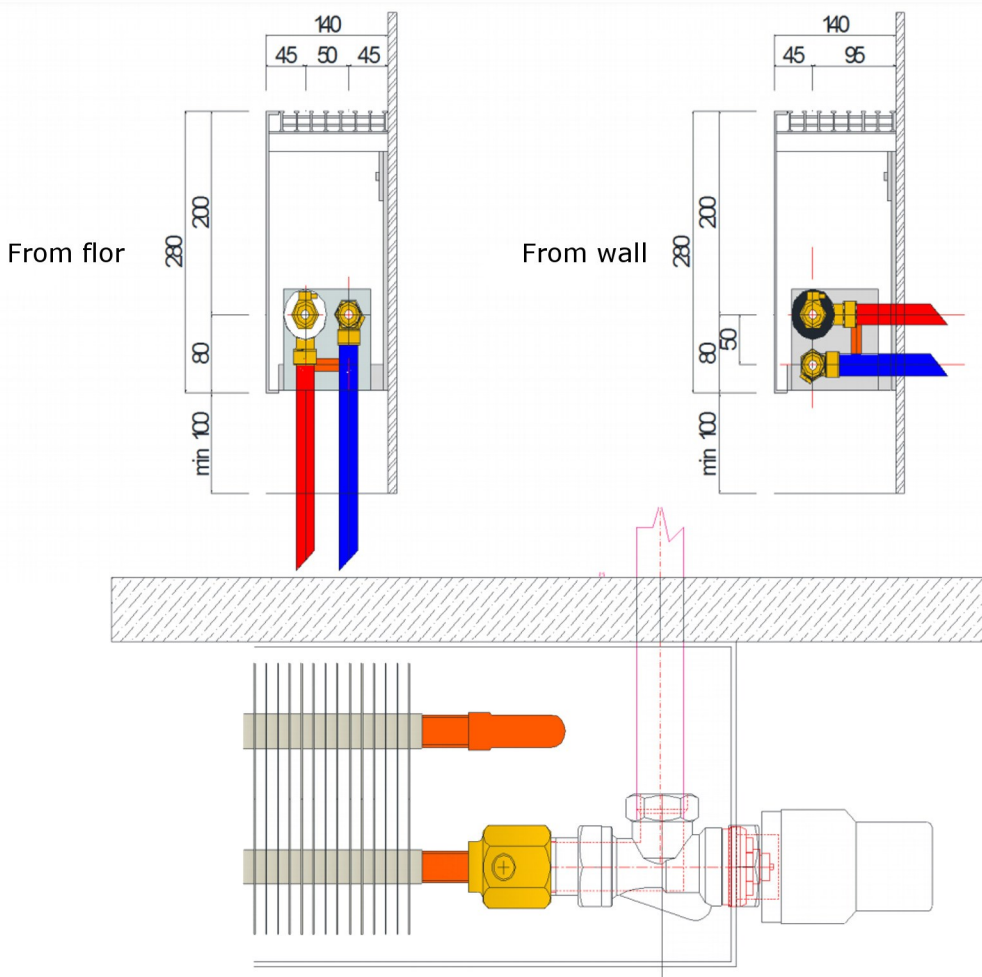
| Typ | 140 | | | | 170 | | | | 200 | | | |
|--------|------|------|-------|-------|------|------|-------|-------|------|------|-------|-------|
| | 100 | 140 | 180 | 240 | 100 | 140 | 180 | 240 | 100 | 140 | 180 | 240 |
| kg/1bm | 7,08 | 7,53 | 10,29 | 13,35 | 7,37 | 7,84 | 10,62 | 13,71 | 7,66 | 8,15 | 10,95 | 14,07 |
| l/1bm | 0,14 | 0,14 | 0,28 | 0,42 | 0,14 | 0,14 | 0,28 | 0,42 | 0,14 | 0,14 | 0,28 | 0,42 |

| Typ | 280 | | | | 340 | | | | 400 | | | |
|--------|------|------|-------|-------|------|-------|-------|-------|-------|-------|-------|-------|
| | 100 | 140 | 180 | 240 | 100 | 140 | 180 | 240 | 100 | 140 | 180 | 240 |
| kg/1bm | 8,94 | 9,49 | 12,34 | 15,53 | 9,93 | 10,51 | 13,40 | 16,65 | 12,49 | 13,12 | 16,05 | 19,36 |
| l/1bm | 0,14 | 0,14 | 0,28 | 0,42 | 0,14 | 0,14 | 0,28 | 0,42 | 0,14 | 0,14 | 0,28 | 0,42 |

| Typ | 500 | | | | 600 | | | |
|--------|-------|-------|-------|-------|-------|-------|-------|-------|
| | 100 | 140 | 180 | 240 | 100 | 140 | 180 | 240 |
| kg/1bm | 13,67 | 14,36 | 17,35 | 20,76 | 15,14 | 15,90 | 18,96 | 22,46 |
| l/1bm | 0,14 | 0,14 | 0,28 | 0,42 | 0,14 | 0,14 | 0,28 | 0,42 |

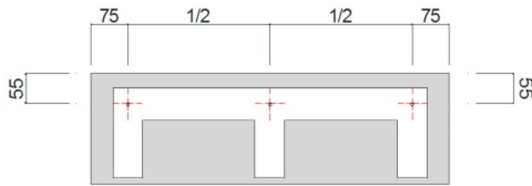
Connection to heating system

Type of connection needs to be specified in your order

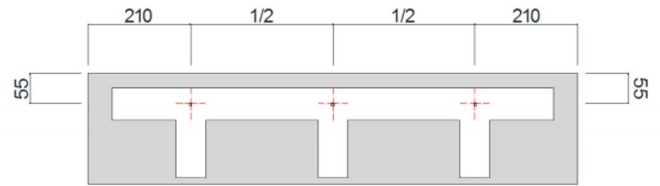


Wall installation

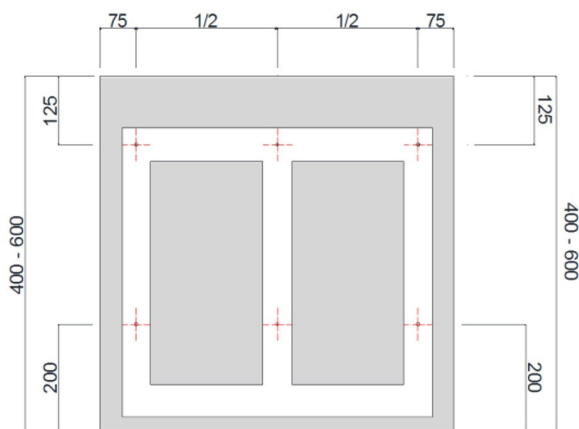
FCW – Radiator height 14 - 340mm
 FCW – Radiator length 600 - 900mm



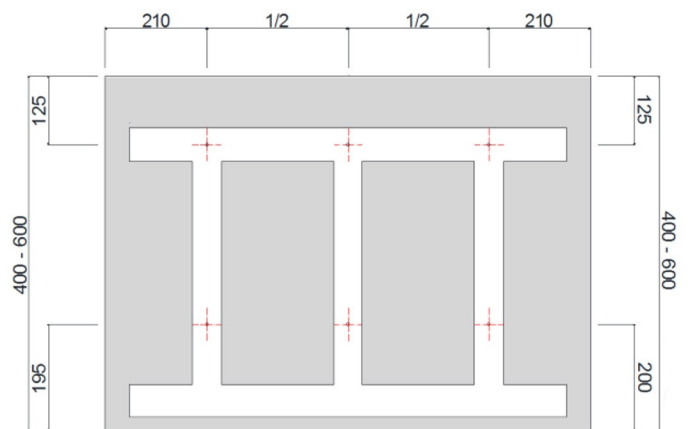
FCW – Radiator height 140 - 340 mm
 FCW – Radiator length 1000 - 2000 mm



FCW – Radiator height 400 - 600 mm
 FCW – Radiator length 600 - 900 mm



FCW – Radiator height 400 - 600 mm
 FCW – Radiator length 1000 - 2000 mm



Order numbers

| Typ | Height | Depth | Length | Design | The connection |
|------------------------|-----------|-----------|-------------|--------------------|-------------------|
| FCW Wall convectors | 140=140mm | 100=100mm | 0800=800mm | 01 = white RAL9016 | F = From the soil |
| | 170=170mm | 140=140mm | ... | 02 = other RAL | W = From the wall |
| | 200=200mm | 180=180mm | ... | | |
| | 280=280mm | 240=240mm | ... | | |
| | 340=340mm | | ... | | |
| | 400=400mm | | ... | | |
| | 500=500mm | | ... | | |
| 600=600mm | | | 2000=2000mm | | |